

**G/NEVR/**  
neo-tech for life

# ELiOS

*LED Phototherapy and Warming Lamp*



The **ELIOS** phototherapy lamp integrates overhead **phototherapy treatment** with servo-controlled heating for newborns.

ELIOS is **designed for flexibility** and can be used **wherever the baby is situated**, eg on a changing table or cradle.

The apparatus consists of an **overhead unit** containing the **phototherapy, illumination and heating elements** mounted on a **height-adjustable stand** for easy deployment.

The **overhead light** includes:

- a **touchscreen control panel**
- **6 blue LEDs** for phototherapy: total max. patient irradiance > 1,500uw/cm<sup>2</sup>
- **4 white LEDs** for illumination
- **350W radiant-heating quartz tube**
- **skin-temperature probe**

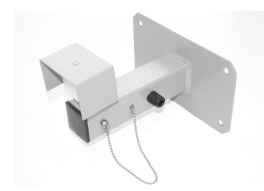
The **touchscreen control panel** allows:

- **servo-controlled** radiant-heating and skin temperature mode
- settings for **manual** thermoregulation mode
- **preheating mode** (thermal power at 30% of max power)
- **phototherapy time-mode**
- timer for **total and remaining hours** of therapy
- **LED lifetime** indicator
- **white-light** switch
- active **acoustic and visual alarms**
- **'Set'** key for settings (avoids **unintentional changes**)

## Accessories & Consumables



**565 - 11814A73**  
Sensor probe fixer Gel  
Reflect Ø26 & Ø38 (24pcs)



**12423A70**  
Wall support



**11730A73**  
Blue Skin Probes (6pcs)



**12423A70**  
Phototherapy Mask (50pcs)



**12172A73**  
Optical Unit -  
Phototherapy and  
Illumination Leds (2pcs)



**1749**  
Radiometer RM400

## Technical specifications

MPG Class	II B (93/42 CEE e s.m.i.)
Safety	I BF (EN 60601-1)
Power supply	230 Vac; 50-60 Hz 500W max
Display	4.3" color touch screen
Phototherapy Mode 1	<b>6 BLUE POWER LED (425-475nm)</b> allows to set the phototherapy time.
Mode 2	allows to set the phototherapy time, the pause time and number of cycles
Mode 3	allows to carry out phototherapy taking into account the therapy time carried out
Phototherapy time	00.00 - 99.50 hh.mm
Numbers of cycles	2 - 10 N'
Lighting	<b>4 WHITE POWER LED</b>
Optical unit life	> 20.000 h
Temperature control	<b>Automatic, Manual, Pre-heating</b>
Heating Automatic	<b>Temperature regulation 23-38 C</b>
Heating Manual	<b>Temperature regulation level (10%)</b>
Pre-heating	<b>Heating set at 30%</b>
Ceiling lamp size	<b>28x12x88 cm - 8 Kg</b>
Stand dimension	<b>68,5x62x(153-178)cm - 26 Kg</b>
3 Wheels Ø5 cm	<b>2 with brake and 1 antistatic</b>



The specifications in this catalogue are indicative. GINEVRI reserves the right to make changes, without further notice, to the products described within this catalogue in order to improve reliability, function or design.